



บันทึกข้อความ

ฝ่ายแผนและพัฒนาบุคลากร
เลขรับ 007224
วันที่ 3 ต.ค. 2554
เวลา 16.55 น.

และฝึกอบรม

กองการเจ้าหน้าที่

เลขรับ 145
วันที่ 3 ต.ค. 2554
เวลา 16.55

ส่วนราชการ คณะมนุษยศาสตร์และสังคมศาสตร์ โทร. 12124 ต่อ 3104

ที่ ศธ 0514.8/4355

วันที่ 5 ต.ค. 2554

เรื่อง ข้าราชการขออนุมัติเปลี่ยนแปลงกำหนดการเดินทางไปราชการต่างประเทศ และแจ้งแหล่งงบประมาณเพิ่มเติม
เรียน อธิการบดี (ผ่านผู้อำนวยการกองการเจ้าหน้าที่)

ตามที่ นางสาวกรวิภา พูลผล ข้าราชการพลเรือนในสถาบันอุดมศึกษา ตำแหน่งอาจารย์ สังกัด คณะมนุษยศาสตร์และสังคมศาสตร์ ได้ขออนุมัติไปราชการต่างประเทศเพื่อเข้าร่วมการนำเสนอผลงานวิชาการ เรื่อง Corpus-Based Abstract-Writing Material for Thai Graduate Students ในการประชุมวิชาการนานาชาติ The American Association for Corpus Linguistics 2011 Conference ณ Georgia State University in Atlanta, Georgia ประเทศสหรัฐอเมริกา ในระหว่างวันที่ 6 - 9 ตุลาคม 2554 จึงขออนุมัติไปราชการระหว่างวันที่ 5-12 ตุลาคม 2554 ตามบันทึกที่ ศธ 0514.8/3724 ลงวันที่ 23 สิงหาคม 2554 นั้น

1. เนื่องจากมีการเปลี่ยนแปลงกำหนดการเดินทางกลับ จึงขอเปลี่ยนแปลงกำหนดการเดินทางจากเดิมระหว่างวันที่ 5-12 ตุลาคม 2554 เป็นระหว่างวันที่ 6-13 ตุลาคม 2554
2. เนื่องจากบุคคลดังกล่าวได้รับงบประมาณสนับสนุนจากทางหลักสูตรศิลปศาสตรมหาบัณฑิต สาขาวิชาภาษาอังกฤษ (ภาคปกติ) เพื่อเป็นค่าใช้จ่ายในการลงทะเบียนเข้าร่วมนำเสนอผลงานวิจัยระดับนานาชาติ จำนวน 10,000 บาท(หนึ่งหมื่นบาทถ้วน) จึงขอแจ้งแหล่งงบประมาณเพิ่มเติม จาก แผนงาน ผู้สำเร็จการศึกษามนุษยศาสตร์และสังคมศาสตร์ งาน/โครงการ จัดการศึกษามนุษยศาสตร์และสังคมศาสตร์ รหัส 0214 หมวดรายจ่าย เงินอุดหนุนทั่วไป กิจกรรม การเรียนการสอน รหัสโครงการ 037-05 โครงการพัฒนาบุคลากรในหรือต่างประเทศ (ป.โท ภาษาอังกฤษ ภาคปกติ) ปีงบประมาณ 2555

จึงเรียนมาเพื่อโปรดพิจารณาอนุมัติ

(ผู้ช่วยศาสตราจารย์ ดร.เยาวลักษณ์ อภิชาติวัลลภ)
คณบดีคณะมนุษยศาสตร์และสังคมศาสตร์

เรียน รองอธิการบดีฝ่ายแผนและพัฒนาบุคลากร

ตามหนังสือที่ศธ 0514.8/3724 ลงวันที่ 23 สิงหาคม 2554

ได้อนุมัติให้นางสาวกรวิภา พูลผล อาจารย์คณะมนุษยศาสตร์ฯ ไปราชการ ณ ต่างประเทศ ในวันที่ 5-12 ต.ค.2554 เป็นเวลา 8 วัน นั้น แต่เนื่องจากมีการเปลี่ยนแปลงกำหนดการเดินทางกลับ จึงขอเปลี่ยนแปลงการเดินทาง เป็น ตั้งแต่วันที่ 6 -13 ต.ค.2554 เป็นเวลา 13 วัน
จึงเรียนมาเพื่อโปรดพิจารณาอนุมัติ

อนุมัติ

17 ต.ค. 54

17 ต.ค. 54

(นางพจมาน ภาระราช)

รักษาการในตำแหน่งหัวหน้างานพัฒนาและฝึกอบรม
ปฏิบัติราชการแทนผู้อำนวยการกองการเจ้าหน้าที่

(รองศาสตราจารย์รังสรรค์ เนียมสนิท)
รองอธิการบดีฝ่ายแผนและพัฒนาบุคลากร

วันที่ 26 ส.ค. 2554
เวลา 14.25

ฝ่ายแผนและพัฒนาบุคลากร
เลขรับ 005825
วันที่ 25 ส.ค. 2554
เวลา 16:30 น.

งานพัฒนาและฝึกอบรม
กองการเจ้าหน้าที่
เลขรับ 6220
วันที่ 25 ส.ค. 2554
เวลา 10:18

บันทึกข้อความ

ส่วนราชการ คณะมนุษยศาสตร์และสังคมศาสตร์ โทร. 12124 ต่อ 3109
ที่ ศร 0514.8/3724 วันที่ 23 สิงหาคม 2554
เรื่อง ข้าราชการขออนุมัติไปราชการต่างประเทศ

เรียน อธิการบดี (ผ่านผู้อำนวยการกองการเจ้าหน้าที่)

ตามที่ นางสาวกรวิภา พูลผล ข้าราชการพลเรือนในสถาบันอุดมศึกษา ตำแหน่งอาจารย์ สังกัด คณะมนุษยศาสตร์และสังคมศาสตร์ ได้รับการตอบรับให้เข้าร่วมการนำเสนอผลงานวิชาการ เรื่อง Corpus-Based Abstract-Writing Material for Thai Graduate Students ในการประชุมวิชาการนานาชาติ The American Association for Corpus Linguistics 2011 Conference ณ Georgia State University in Atlanta, Georgia ประเทศสหรัฐอเมริกา ในระหว่างวันที่ 6 - 9 ตุลาคม 2554

คณะฯ ได้พิจารณาแล้วเห็นว่าการไปราชการครั้งนี้ จะเป็นประโยชน์ต่อการพัฒนาผลงานทาง วิชาการของคณาจารย์ในเวทีระดับนานาชาติ จึงใคร่ขออนุมัติให้ นางสาวกรวิภา พูลผล ไปราชการ ณ ประเทศ สหรัฐอเมริกา มีกำหนด 8 วัน ในระหว่างวันที่ 5 - 12 ตุลาคม 2554 โดยเบิกค่าใช้จ่ายจากงบประมาณเงินรายได้ ประจำปี 2555 แผนงาน ผู้สำเร็จการศึกษาสาขามนุษยศาสตร์และสังคมศาสตร์ งาน งานจัดการศึกษาสาขามนุษยศาสตร์และสังคมศาสตร์ รหัส 0214 หมวดรายจ่าย อุดหนุนการดำเนินงานทั่วไป (โครงการพัฒนาบุคลากร ในหลักสูตร โครงการพิเศษ สาขาวิชาภาษาอังกฤษ) จำนวน 60,000 บาท (หกหมื่นบาทถ้วน) พร้อมนี้ได้แนบ สำเนาหนังสือตอบรับมาเพื่อประกอบการพิจารณา และใคร่ขอความอนุเคราะห์ในการออกหนังสืออำนวยความสะดวกในการขอวีซ่าด้วย จักขอบคุณยิ่ง

จึงเรียนมาเพื่อโปรดพิจารณาอนุมัติ

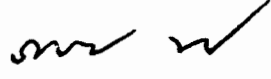


(ผู้ช่วยศาสตราจารย์ ดร.เยาวลักษณ์ อภิชาติวัลลภ)
คณบดีคณะมนุษยศาสตร์และสังคมศาสตร์

อนุมัติ/ลงนามแล้ว



(ผู้ช่วยศาสตราจารย์ชำนาญ บุญญาพิพิพงษ์)
รองอธิการบดีฝ่ายพัฒนาระบบโครงสร้างพื้นฐาน
รักษาราชการแทนอธิการบดีมหาวิทยาลัยขอนแก่น
26 ส.ค. 2554
ปฏิบัติราชการแทนเลขาธิการคณะกรรมการการอุดมศึกษา



(รองศาสตราจารย์รุ่งตรรก์ นียนอนต์)
รองอธิการบดีฝ่ายแผนและพัฒนาบุคลากร
26 ส.ค. 2554

เรียน อธิการบดี (ผ่านรองอธิการบดีฝ่ายแผนและพัฒนาบุคลากร)
ตามคำสั่ง สทอ. ที่ 425/2552 สว. 28 ส.ค. 2552 เป็นอำนาจของอธิการบดี
ที่จะพิจารณาอนุมัติ จึงเห็นควรพิจารณาอนุมัติตัวบุคคลและโปรดลงนามในเอกสาร
ที่แนบมาพร้อมนี้

DEPARTMENT OF APPLIED LINGUISTICS
AND ENGLISH AS A SECOND LANGUAGE
College of Arts and Sciences

P.O. Box 4099
Atlanta GA 30302-4099

Phone: 404/413-5200
Fax: 404/413-5201



May 20, 2011

Dr. Kornwipa Poonpon
Assistant Dean, Faculty of Humanities and Social Sciences
Lecturer, English Program
Khon Kaen University, Thailand 40002

Dear Dr. Kornwipa Poonpon,

On behalf of the Program Committee, I want to thank you for submitting your proposal, "Corpus-Based Abstract-Writing Material for Thai Graduate Students," for presentation at the American Association for Corpus Linguistics 2011 Conference to be held at Georgia State University in Atlanta, Georgia, in the United States on October 6-9.

I am pleased to inform you that your paper has been accepted for inclusion in the program. On July 31st, I will inform you of the exact date and time of your presentation. I ask that you please confirm your attendance to the conference through e-mail by June 1st.

I will be sending detailed announcements about the conference and a link to our updated AACL 2011 website soon.

Sincerely yours,

A handwritten signature in cursive script, appearing to read "V. Cortes".

Viviana Cortes, PhD
Associate Professor
for AACL Program Committee
vcortes@gsu.edu

Georgia State University, a unit of the University System of Georgia, is an equal opportunity educational institution and is an equal opportunity/affirmative action employer.

ท่านออกต่าง
๕
๕/๖๖๖

(๖) ๖๖๖๖๖๖๖๖๖๖



based techniques to the analysis. Finally, the presentation highlights future directions to expand research within and beyond the classroom context and the language of its participating members.



Randi Reppen, Northern Arizona University

Using corpora for pedagogy: Does it make a difference?

Over the last several years there has been an increased interest in using corpora and/or corpus research for pedagogical purposes. Like other innovations, this has received a lot of hype. This presentation explores some of the hype, and presents the results of a systematic look at corpus-based textbooks and traditional textbooks for vocabulary and grammar instruction. A set of traditional and corpus-based textbooks are compared at two levels. First, at a global level to identify the material covered and the scope of presentation. Second, specific vocabulary and grammar topics are examined across the two sets of textbooks to see how the grammar and vocabulary topics are dealt with in these two approaches.

TOP

Conference Registration

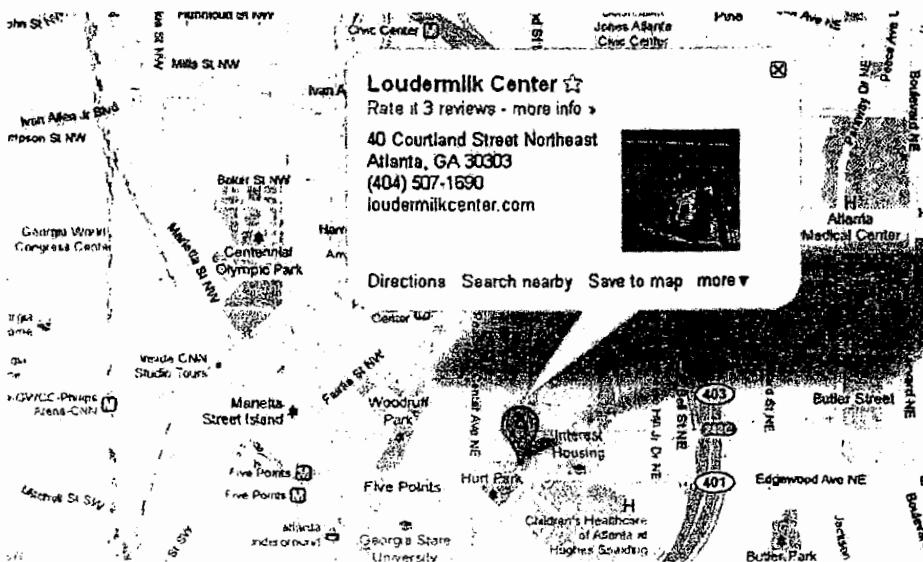
	Regular	Student
July 15 – August 31	\$180	\$120
September 1 – October 6	\$200	\$130
At conference	\$220	\$140

Note: The registration fee includes lunches and beverages for the three-day conference and cocktails for the opening reception on Friday, October 7, 2011 at 6:30 pm. We follow approximately the same conference rates/fees from the last two AACL conferences (2008, Brigham Young University, and 2009, University of Alberta).

Please use this link to register and pay by credit card through GSU's secured payment site. If you are unable to pay by credit card, you can pay by check at the conference, at the rates noted above. Procedure for cancellations: Please notify us <aac2011@gmail.com> in writing via e-mail no later than two weeks before the start of the conference.

Conference Venue: The Loudermilk Center, Downtown Atlanta

<http://www.loudermilkcenter.com/>



Located in the heart of downtown Atlanta, Georgia, The Loudermilk Center is conveniently accessed from all points in Metro Atlanta via I-75 and I-20. Loudermilk Center is within close proximity to the Georgia State Capitol, Georgia Tech and Georgia State University, and major corporations and public agencies in the downtown Atlanta corridor. The City of Atlanta, an important partner of the Center, is located across the street. Additionally, the Atlanta MARTA Peachtree-Center Station, Atlanta's rapid rail and bus station, is only a short distance away. Hartsfield International Airport is less than 15 miles from The Loudermilk Center.

สำนักงานกตอ

Travel to Atlanta: The Loudermilk Center, Georgia State University, and recommended hotels (see below) are located in Downtown Atlanta and are easily accessible from the Hartsfield-Jackson Atlanta International Airport. Use MARTA (Metropolitan Atlanta Rapid Transit Authority) Rail Service from the airport to FIVE POINTS or PEACHTREE CENTER (approximately 20 minutes travel time to Downtown) stations to get to your hotel or the conference venue. Taxi and shuttle services to your hotel are also available.

Driving directions to The Loudermilk Center are available here: <http://www.loudermilkcenter.com/atlanta-conference-center-parking.aspx>

Hotels for ACL 2011

Here are some hotel options near the conference venue. The main criteria for selecting these hotels included price, proximity to The Loudermilk Center and/or a MARTA stop, and overall rating. All hotels listed below are within one mile walking distance to the venue.

Holiday Inn Hotel Atlanta Special conference rate \$84
101 Andrew Young Intl Boulevard, Atlanta, GA 0.3 mi NW
(404) 524-5555 #

When you select October 6-9, 2011, follow the prompts to access GSU the rate here:

The Elish Hotel Special Loudermilk Rate \$141
178 Peachtree Street Northwest, Atlanta, GA 0.2 mi N
(404) 523-5155 # · ellishotel.com

Sheraton Hotel Special Loudermilk Rate \$119.00
165 Courtland St.
Atlanta, GA 30303
Phone: 404-658-6500
Toll free: 800-833-6624
<http://www.sheratonatlantahotel.com/>

Residence Inn Atlanta Downtown Special Loudermilk Rate \$121
134 Peachtree Street NW, Atlanta, GA 0.1 mi N
(404) 522-0950 # · marriott.com

Omni Hotel at CNN Center
100 CNN Center, Atlanta, GA 0.4 mi NW
(404) 659-0000 # · omnihotels.com

Quality Hotel Downtown
89 Luckie Street, Atlanta, GA 0.1 mi NW
(404) 524-0672 (Fax) # · atlantadowntowninn.com

The Westin Peachtree Plaza
210 Peachtree Street Northwest, Atlanta, GA 0.2 mi N
(404) 659-1400 # · starwoodhotels.com

The Ritz-Carlton, Atlanta Hotel
181 Peachtree Street, Northeast, Atlanta, GA 0.2 mi N
(404) 659-0400 # · ritzcarlton.com

Glenn Hotel Downtown Atlanta Georgia
110 Marietta Street, Atlanta, GA 0.3 mi W
(404) 521-2250 # · glennhotel.com

Hampton Inn & Suites Atlanta-Downtown
161 Spring Street Northwest, Atlanta, GA 0.2 mi N
(404) 589-1111 # · hptoninn.com

Days Inn Atlanta Downtown
300 Spring Street Northwest, Atlanta, GA 0.5 mi N
(404) 523-1144 # · daysinn.com

Embassy Suites Atlanta Centennial Olympic Park
267 Marietta St., Atlanta, GA 0.6 mi NW
(404) 223-2300 # · embassysuites1.hilton.com

What to do in Atlanta

As the gateway to the New South, Atlanta has certainly come a long way since it burned to the ground during General William Tecumseh Sherman's March to the Sea in 1864. And while remains of the Civil War are still a big draw for visitors, the Kennesaw Mountain/National Battlefield Park and Cheatham Hill specifically, there is much more to this great city than 150 year old confrontations. Atlanta hosts the world's largest aquarium, the World of Coca-Cola museum, a world-class zoo, and an impressive botanical garden. Federal parks highlighting the life and works of native son Martin Luther King, Jr. as well as reinvigorated neighborhoods scattered throughout the city is what make Atlanta unique. Places like Virginia Highlands, Midtown, and Buckhead, are easy to navigate on foot and has great shopping, dining and nightlife. Progressive, yet rich in history, Atlanta truly has something for everyone.

10 popular Atlanta tourist attractions

Sponsors

Thanks to our sponsors:

- Georgia State University Research Foundation (GSURF)
- Atlanta-Fulton County Stadium

ดำเนินการโดย

(Handwritten signature)

ศูนย์วิจัยภาษาและวัฒนธรรม

Travel to Atlanta: The Loudermilk Center, Georgia State University, and recommended hotels (see below) are located in Downtown Atlanta and are easily accessible from the Hartsfield-Jackson Atlanta International Airport. Use MARTA (Metropolitan Atlanta Rapid Transit Authority) Rail Service from the airport to FIVE POINTS or PEACHTREE CENTER (approximately 20 minutes travel time to Downtown) stations to get to your hotel or the conference venue. Taxi and shuttle services to your hotel are also available.

Driving directions to The Loudermilk Center are available here: <http://www.loudermilkcenter.com/atlanta-conference-center-parking.aspx>

Hotels for AACL 2011

Here are some hotel options near the conference venue. The main criteria for selecting these hotels included price, proximity to The Loudermilk Center and/or a MARTA stop, and overall rating. All hotels listed below are within one mile walking distance to the venue.

Holiday Inn Hotel Atlanta Special conference rate \$84
101 Andrew Young Intl Boulevard, Atlanta, GA 0.3 mi NW
(404) 524-5555 #

When you select October 6-9, 2011, follow the prompts to access GSU the rate here:

The Eilla Hotel Special Loudermilk Rate \$141
178 Peachtree Street Northwest, Atlanta, GA 0.2 mi N
(404) 523-5155 # - ellishotel.com

Sheraton Hotel Special Loudermilk Rate \$119.00
165 Courtland St.
Atlanta, GA 30303
Phone: 404-659-6500
Toll free: 800-833-8624
<http://www.sheratonatlantahotel.com/>

Residence Inn Atlanta Downtown Special Loudermilk Rate \$121
134 Peachtree Street NW, Atlanta, GA 0.1 mi N
(404) 522-0950 # - marriott.com

Omni Hotel at CNN Center
100 CNN Center, Atlanta, GA 0.4 mi NW
(404) 659-0000 # - omnihotels.com

Quality Hotel Downtown
89 Luckie Street, Atlanta, GA 0.1 mi NW
(404) 524-0672 (Fax) # - atlantadowntowninn.com

The Westin Peachtree Plaza
210 Peachtree Street Northwest, Atlanta, GA 0.2 mi N
(404) 659-1400 # - starwoodhotels.com

The Ritz-Carlton, Atlanta Hotel
181 Peachtree Street, Northeast, Atlanta, GA 0.2 mi N
(404) 659-0400 # - ritzcarter.com

Glenn Hotel Downtown Atlanta Georgia
110 Marietta Street, Atlanta, GA 0.3 mi W
(404) 521-2250 # - glennhotel.com

Hampton Inn & Suites Atlanta-Downtown
161 Spring Street Northwest, Atlanta, GA 0.2 mi N
(404) 589-1111 # - haptioninn.com

Days Inn Atlanta Downtown
300 Spring Street Northwest, Atlanta, GA 0.5 mi N
(404) 523-1144 # - daysinn.com

Embassy Suites Atlanta Centennial Olympic Park
287 Marietta St., Atlanta, GA 0.6 mi NW
(404) 223-2300 # - embassysuites1.hilton.com

What to do in Atlanta

As the gateway to the New South, Atlanta has certainly come a long way since it burned to the ground during General William Tecumseh Sherman's March to the Sea in 1864. And while remains of the Civil War are still a big draw for visitors, the Kennesaw Mountain/National Battlefield Park and Cheatham Hill specifically, there is much more to this great city than 150 year old confrontations. Atlanta hosts the world's largest aquarium, the World of Coca-Cola museum, a world-class zoo, and an impressive botanic garden. Federal parks highlighting the life and works of native son Martin Luther King, Jr. as well as reinvigorated neighborhoods scattered throughout the city is what make Atlanta unique. Places like Virginia Highlands, Midtown, and Buckhead, are easy to navigate on foot and has great shopping, dining and nightlife. Progressive, yet rich in history, Atlanta truly has something for everyone.

10 popular Atlanta tourist attractions

Sponsors

Thanks to our sponsors

- Georgia State University Research Foundation (GSURF)
- Atlanta-Fulton County Stadium (AFCS)

ถ้าเนาถูกต้อง

2/10/11

นางสาวกัญญา วัฒนศิริ

DEPARTMENT OF APPLIED LINGUISTICS
AND ENGLISH AS A SECOND LANGUAGE
College of Arts and Sciences

P.O. Box 4099
Atlanta GA 30302-4099

Phone: 404/413-5200
Fax: 404/413-5201



May 20, 2011

Dr. Kornwipa Poonpon
Assistant Dean, Faculty of Humanities and Social Sciences
Lecturer, English Program
Khon Kaen University, Thailand 40002

Dear Dr. Kornwipa Poonpon,

On behalf of the Program Committee, I want to thank you for submitting your proposal, "Corpus-Based Abstract-Writing Material for Thai Graduate Students," for presentation at the American Association for Corpus Linguistics 2011 Conference to be held at Georgia State University in Atlanta, Georgia, in the United States on October 6-9.

I am pleased to inform you that your paper has been accepted for inclusion in the program. On July 31st, I will inform you of the exact date and time of your presentation. I ask that you please confirm your attendance to the conference through e-mail by June 1st.

I will be sending detailed announcements about the conference and a link to our updated AACL 2011 website soon.

Sincerely yours,

A handwritten signature in cursive script, appearing to read "V. Cortes".

Viviana Cortes, PhD
Associate Professor
for AACL Program Committee
vcortes@gsu.edu

Georgia State University, a unit of the University System of Georgia, is an equal opportunity educational institution and is an equal opportunity/affirmative action employer.

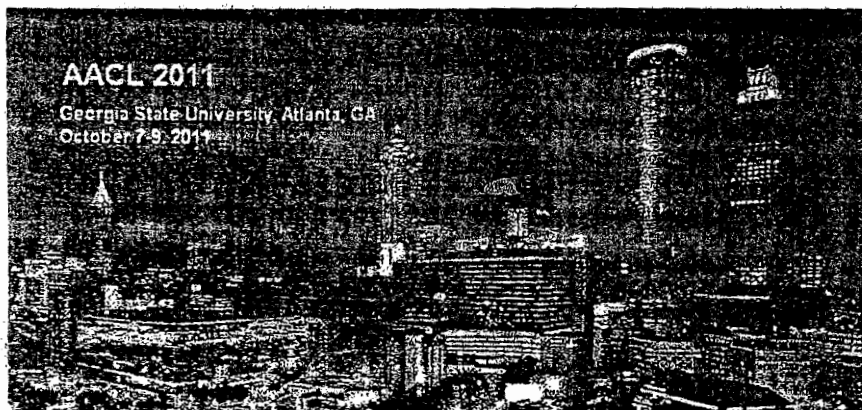
ตำแหน่ง
ศาสตราจารย์

A handwritten signature in Thai script, likely belonging to the recipient or a representative.

(ชื่อ นามสกุล) (ชื่อ นามสกุล)

AACL 2011 - American Association for Corpus Linguistics Conference

- Conference Overview
- Important Dates
- Plenary Speakers
- Conference Registration
- Conference Venue
- Travel and Accommodation
- Hotels for AACL 2011
- What to do in Atlanta
- Sponsors



The 10th Conference for the American Association for Corpus Linguistics (AACL) will be held at Georgia State University in Atlanta, GA, USA, on October 7-9, 2011.

Conference Venue: The Loudermilk Center in Downtown Atlanta

Contact Information:

AACL 2011 Organizing Committee
 PO Box 4099
 Atlanta, GA, 30302
 (404) 413-5195 or (404) 413-5186

Conference e-mail: aac2011@gmail.com

Previous AA(A)CL conferences: University of Alberta (2009), Brigham Young University (2008), Northern Arizona University (2006, 2000), University of Michigan (2005, 1999), Montclair State University (2004), IUPUI (2002), and University of Massachusetts at Boston (2001)

Important Dates:

- February 15, 2011: Deadline for submission of abstracts
- April 15, 2011: Notification of decisions on abstracts
- July 15, 2011: Early registration begins
- August 1, 2011: Tentative program schedule will be sent
- August 31, 2011: Early registration closes
- September 1 to October 6, 2011: Regular registration period
- October 7-9, 2011: Conference

Plenary Speakers



Paul Baker, Lancaster University

Has American English gotten any different? Using the Brown family to track diachronic change in American (and British) English

This study introduces the AE06 corpus, a one million word corpus of standard written American English from 2006, created recently at Lancaster University. AE06 is the newest member of the Brown family of reference corpora, which contains versions in British and American English (using the same sampling frame) from a range of time periods over the last 100 years. The talk considers the pros and cons of building and comparing small reference corpora and then describes the collection of the AE06 corpus, as well as comparing it to the other corpora in the Brown family. First I consider which words have a) increased b) decreased and c) remained fairly stable in frequency when comparing AE06 to comparable American corpora from the 1960s and 1990s. Second, I compare the AE06 to its British equivalent BE06 in order to determine lexical and cultural keywords between the two varieties. I consider whether findings from the studies carried out by Leech and Fallon on the 1960s Am/Br corpora and Oakes on the 1990s corpora continue to hold for the 2000s.

Is American English still differentiated from British English as 'masculine to the point of machismo, militaristic, dynamic and actuated by high ideals, driven by technology, activity and enterprise' (Leech and Fallon 1992: 44)? Finally, I ask whether spelling preferences in words like colour/color and go/gotten continue to prevail as marked ways in which American and British English are distinguished, or whether one variety's spelling preferences appears to be more influential.

Eniko Csomay, San Diego State University

Classroom discourse analysis with corpus linguistics: How much more do we know?

Since the first discussions of classroom discourse in the 1970s, researchers have carried out detailed descriptions of particular aspects of that context. These studies provide in-depth analyses of a few texts as they explore the structure of discourse or describe how the participants engage in dialogues in the classroom. This presentation introduces new, corpus-based approaches to classroom discourse analysis. A series of studies that investigate aspects of classroom discourse (e.g., discourse structure, the participants' linguistic characteristics) will be discussed for their research questions, analytical tools, and findings. These studies also illustrate what more we can know about classroom discourse due to the application of corpus-

AACL 2011 - American Association for Corpus Linguistics Conference

- Conference Overview
- Important Dates
- Plenary Speakers
- Conference Registration
- Conference Venue
- Travel and Accommodation
- Hotels for AAACL 2011
- What to do in Atlanta
- Sponsors



The 10th Conference for the American Association for Corpus Linguistics (AAACL) will be held at Georgia State University in Atlanta, GA, USA, on October 7-9, 2011.

Conference Venue: The Loudermilk Center in Downtown Atlanta

Contact Information:

AAACL 2011 Organizing Committee
 PO Box 4099
 Atlanta, GA, 30302
 (404) 413-5195 or (404) 413-5186

Conference e-mail: aac2011@gmail.com

Previous AA(A)CL conferences: University of Alberta (2009), Brigham Young University (2008), Northern Arizona University (2006, 2000), University of Michigan (2005, 1999), Montclair State University (2004), IUPUI (2002), and University of Massachusetts at Boston (2001)

Important Dates:

- February 15, 2011: Deadline for submission of abstracts
- April 15, 2011: Notification of decisions on abstracts
- July 15, 2011: Early registration begins
- August 1, 2011: Tentative program schedule will be sent
- August 31, 2011: Early registration closes
- September 1 to October 6, 2011: Regular registration period
- October 7-9, 2011: Conference

Plenary Speakers



Paul Baker, Lancaster University

Has American English gotten any different? Using the Brown family to track diachronic change in American (and British) English

This study introduces the AE06 corpus, a one million word corpus of standard written American English from 2006, created recently at Lancaster University. AE06 is the newest member of the Brown family of reference corpora, which contains versions in British and American English (using the same sampling frame) from a range of time periods over the last 100 years. The talk considers the pros and cons of building and comparing small reference corpora and then describes the collection of the AE06 corpus, as well as comparing it to the other corpora in the Brown family. First I consider which words have a) increased b) decreased and c) remained fairly stable in frequency when comparing AE06 to comparable American corpora from the 1960s and 1990s. Second, I compare the AE06 to its British equivalent BE06 in order to determine lexical and cultural keywords between the two varieties. I consider whether findings from the studies carried out by Leech and Fallon on the 1960s Am/Br corpora and Oakes on the 1990s corpora continue to hold for the 2000s.

Is American English still differentiated from British English as 'masculine to the point of machismo, militaristic, dynamic and actuated by high ideals, driven by technology, activity and enterprise' (Leech and Fallon 1992: 44)? Finally, I ask whether spelling preferences in words like colour/color and go/gotten continue to prevail as marked ways in which American and British English are distinguished, or whether one variety's spelling preferences appears to be more influential.

Eniko Csomay, San Diego State University

Classroom discourse analysis with corpus linguistics: How much more do we know?

Since the first discussions of classroom discourse in the 1970s, researchers have carried out detailed descriptions of particular aspects of that context. These studies provide in-depth analyses of a few texts as they explore the structure of discourse or describe how the participants engage in dialogues in the classroom. This presentation introduces new, corpus-based approaches to classroom discourse analysis. A series of studies that investigate aspects of classroom discourse (e.g., discourse structure, the participants' linguistic characteristics) will be discussed for their research questions, analytical tools, and findings. These studies also illustrate what more we can know about classroom discourse due to the application of corpus-



based techniques to the analysis. Finally, the presentation highlights future directions to expand research within and beyond the classroom context and the language of its participating members.



Randi Reppen, Northern Arizona University

Using corpora for pedagogy: Does it make a difference?

Over the last several years there has been an increased interest in using corpora and/or corpus research for pedagogical purposes. Like other innovations, this has received a lot of hype. This presentation explores some of the hype, and presents the results of a systematic look at corpus-based textbooks and traditional textbooks for vocabulary and grammar instruction. A set of traditional and corpus-based textbooks are compared at two levels. First, at a global level to identify the material covered and the scope of presentation. Second, specific vocabulary and grammar topics are examined across the two sets of textbooks to see how the grammar and vocabulary topics are dealt with in these two approaches.

TOP

Conference Registration

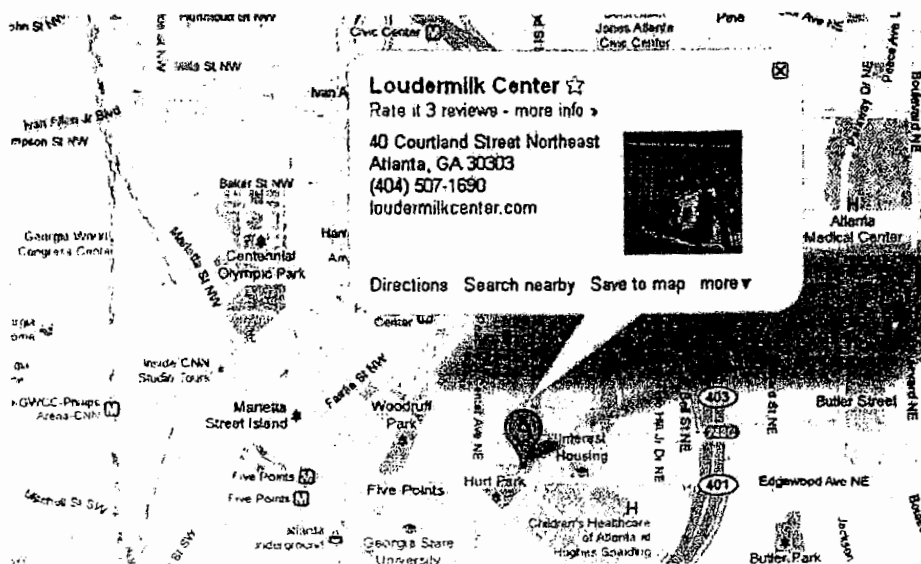
	Regular	Student
July 15 - August 31	\$180	\$120
September 1 - October 6	\$200	\$130
At conference	\$220	\$140

Note: The registration fee includes lunches and beverages for the three-day conference and cocktails for the opening reception on Friday, October 7, 2011 at 6:30 pm. We follow approximately the same conference rates/fees from the last two AACL conferences (2008, Brigham Young University; and 2009, University of Alberta).

Please use this link to register and pay by credit card through GSU's secured payment site. If you are unable to pay by credit card, you can pay by check at the conference, at the rates noted above. Procedure for cancellations. Please notify us <aac12011@gmail.com> in writing via e-mail no later than two weeks before the start of the conference.

Conference Venue: The Loudermilk Center, Downtown Atlanta

<http://www.loudermilkcenter.com/>



located in the heart of downtown Atlanta, Georgia. The Loudermilk Center is conveniently accessed from all points in Metro Atlanta via I-75 and I-20. Loudermilk Center is within close proximity to the Georgia State Capitol, Georgia Tech and Georgia State University, and major corporations and public agencies in the downtown Atlanta corridor. The Atlanta-Fulton County Stadium, an important partner of the Center, is located across the street. Additionally, the Atlanta MARTA Peachtree Center Station, Atlanta's rapid rail and bus station, is just a short distance away. Hartsfield International Airport is less than 15 miles from The Loudermilk Center.

AACL 2011 PROGRAM

October 7-9, 2011 *** The Loudermilk Center, Atlanta, GA
 Department of Applied Linguistics and English as a Second Language
 Georgia State University

Friday, October 7, 2011

[AM] 7:30 to 8:30	REGISTRATION			
8:30 to 9:20	OPENING PROGRAM			
	MARK POPE ROOM	PAUL DUKE ROOM	CHILDS/YOUNG ROOM	BOARD ROOM
[AM] 9:30 to 10:00	Alba-Salas, Josep Inchoative Collocations with <i>dar 'give'</i> in Spanish: A Corpus- Based Diachronic Study (1200s- 2000)	Craig, Elizabeth OF MICE AND MEN: Teachable Lexicogrammatical Patterns in Medical English	Demeter, Gusztav Register Variation in the Use of Apologies in Written Discourse	Harris, Michael J. Syntactic Priming and the Portuguese Inflected Infinitive
10:10 to 10:40	Calabrese, Rita Standardizing Variation in a Multilingual Context: Insights into the Past and Present State of Indian English	Miller, Don Using Internal Criteria to Assess Corpus Representativeness for Lexical Studies	Kretschmar, Jr., William Defining <i>firecat</i> : An Improved Model for Corpus-Based Lexicology	Al-Surmi, Mansoor Soap Opera vs. Sitcom: Word Coverage and Incidental Vocabulary Learning
10:50 to 11:20	Albakry, Mohammed Enforcing a Racist Ideology: A Corpus-Based Study of New England's Complicity in Colonial America's Slavery	Brown, Earl, Gradoville, Michael, and File-Muriel, Richard Form and Lemma Frequencies as Predictors of Phonetic Variation	Francom, Jerid and Ussishkin, Adam Converging Methodologies: Assessing Corpus Representativeness through Psycholinguistic Measures	Forchini, Pierfranca Teaching Speech via Movies: "That's great, you got the Cokes!"

11:30 to 12:00	<p>Mohamed, Ghada</p> <p>Text Classification of the BNC Using Corpus and Statistical Methods</p>	<p>Balasubramanian, Chandrika and Balasubramanian, Tyagaraja</p> <p>More on Concentric Circles: Analyzing Variation within New Varieties of Englishes</p>	<p>Lee, Ji Won</p> <p>Polarity Sensitivity of <i>much</i> and <i>many</i> by Register Variation</p>	<p>Polat, Brittany</p> <p>Investigating Conversational Discourse Features through a Developmental Learner Corpus</p>
12:00 to 1:30	LUNCH			
[PM] 1:30 to 2:00	<p>MacQueen, Donald</p> <p>Tracing the Empirical Footprint of Collective Linguistic Avoidance</p>	<p>Chujo, Kiyomi; Anthony, Laurence; and Oghigian, Kathryn</p> <p>Blended Computer-Based and Paper-Based DDL Using a Parallel Web-Based Concordancer</p>	<p>Collentine, Joseph and Asencion-Delaney, Yuly</p> <p>A Corpus-Based Analysis of Subjunctive Use by Spanish FL Learners</p>	<p>Titak, Ashley</p> <p>Variance in Speech Patterns in Congress: Gender, Region and Party</p>
2:10 to 2:40	<p>Caskey, Forrest</p> <p>Holding the Floor: A Corpus Analysis of Male, Female, and Queer Speech</p>	<p>Fang, Alex Chengyu and Cao, Jing</p> <p>A Corpus-Based Investigation of the Lexical Characteristics of Dialogue Acts</p>	<p>Vanderbauwhede, Gudrun</p> <p>The French and Dutch Demonstrative Determiner in Parallel, Comparable and Learner Corpora</p>	<p>Bennett, Gena</p> <p>The Noun Phrase in Scholarly versus Freshman Writing: A Schematic Model</p>
2:50 to 3:20	<p>Ai, Haiyang and Lu, Xiaofei</p> <p>A Corpus-Informed Web-Based Chinese ICALL System</p>	<p>Davies, Mark</p> <p>A Comparison of Google Books and the Corpus of Historical American English (COHA): Researching Lexical, Morphological, Syntactic, and Semantic Changes in American English</p>	<p>MacCarthy, Phillip</p> <p>The Gramulator: A Cure for the Arthmophobic Student of Linguistics</p>	

3:30 to 4:00	Martinez Garcia, Maria Teresa and Wulff, Stephanie Infinitival and Gerundial Complementation in German and Spanish ESL Writing	Newman, John Collocating Bodyparts	Radia, Hannachi, and Delphine, Giulliani Corpus-Based Dictionaries for ESP Learners Using Semantic Prototypes	Yang, Weiwei and Weigle, Sara Lexical Richness of ESL Writing and the Role of Prompt
4:10 to 4:40	Warren, Martin Register and Genre-Specific Phraseologies	Vaugh, Oksana <i>"I'm not Going to Speculate":</i> Lexical Bundles in White House Press Briefings	Park, Kwanghyun and Lu, Xiaofei Automatic Analysis and Tagging of Thematic Structure in Written Corpora	Murphy, Amanda Exaggerating the Good, Side-Lining the Bad: CEOs Letters in 2008
PAUL BAKER PLENARY				
4:50 to 5:50	Has American English Gotten Any Different? Using the Brown Family to Track Diachronic Change in American (and British) English The Loudermilk Ballroom			
6:00 to 7:00	RECEPTION			

Saturday, October 8, 2011

TIME	MARK POPE ROOM	PAUL DUKE ROOM	CHILDS/YOUNG ROOM	BOARD ROOM
[AM] 9:00 to 9:30	Barlow, Michael and Brezina, Vaclav Social and Individual Variation in Spoken Language Corpora	Ekici, Deniz This Language is Our Separator and Unifier: The Discursive Construction of Kurdish National Identity (1898-1909)	Minugh, David Targeted Vocabulary and Bilingual Literacy in Swedish Prospective University Students	Hellin Garcia, Maria José Building Metaphors in the Rhetorical Constructions of Terrorism

<p>9:40 to 10:10</p>	<p>Smith, Catherine A Register Study of Professional Speech</p>	<p>Subitreu, Nicholas and Lee, Joseph Corpus Analysis of Lexical Bundles in EAP Classroom Lessons</p>	<p>Keck, Casey Deficit Views of Language Learners in Applied Linguistic Discourses: A Corpus-Based Critical Discourse Analysis</p>	<p>Safwat, Saleh Mohammed Designing and Developing a Written Modern Corpus of Contemporary Arabic (WMMoca)</p>
<p>10:20 to 10:50</p>	<p>Kudoyarova, Tatiana Use Patterns and Register Distribution of Abbreviations in "Asahi Newspaper"</p>	<p>Berber Sardinha, Tony Dimensions of Variation in Metaphor Use</p>	<p>Jabbour, Georgette Designing and Analyzing a Corpus for Teaching Purposes</p>	<p>Urzua, Alfredo Back to the Classroom: Re-Contextualizing Learner Corpus Data</p>
<p>11:00 to 11:30</p>	<p>McIntyre, Dan and Walker, Brian Modality and Freedom of the Press in Early Modern English Journalistic Writing: A Corpus Stylistic Analysis</p>	<p>Conrad, Susan Corpus Linguistics for Engineering Education: Writing in Civil Engineering</p>	<p>Juola, Patrick; Ryan, Michael V.; and Mehok, Michael Geographically Localizing Tweets via Stylometric Analysis</p>	<p>Scrivner, Olga Multi-Level Corpus of Old Occitan</p>
<p>11:40 to 12:10</p>	<p>Duffley, Patrick and Meyer, Charles Tense, Aspect, and the English -ing Form in Subject Function</p>	<p>Gales, Tammy Variation in Threats: A Corpus Analysis of Stance-Controlled Complement Clauses</p>	<p>Miglio, Viola; Harris, Michael; Lopez, Audrey; Santana-Paixao, Raquel; and Wheeler, Eva Accusative-Oblique Alternations in Spanish Clitics</p>	<p>Staples, Shelley; Laird, John; and Egbert, Jesse Variability of Lexical Bundles in the TOEFL iBT Writing Section</p>
<p>12:10 to 1:30</p>	<p>LUNCH</p>	<p>LUNCH</p>	<p>LUNCH</p>	<p>LUNCH</p>

[PM] 1:30 to 2:00	Gray, Bethany When Discipline Tells Only Part of the Story: Linguistic Variation in Academic Research Articles	Roberson, Audrey A Corpus-Based Analysis of Facebook Status Updates, Twitter Posts, and Online Reader Comments	Neary-Sundquist, Colleen Connecting Speech and Writing in a Learner Corpus of German	O'Donnell, Matthew Brook; Römer, Ute; and Ellis, Nick VACnet: Retrieving and Analyzing Verb-Argument Constructions at Scale
2:10 to 2:40	Heather, Julian and Helt, Marie Pre-Service Teachers' Attitudes Towards Corpus Use in [Grammar] Teaching	Wang, Linxiao and Jo, Hie-Myung Chinese Learners' Acquisition of English Verbs: A Corpus-Driven Cross-Sectional Approach	Kandil, Magdi Corpus-informed Critical Discourse Analysis: From Counting Words to Analyzing Content	Ziegler, Nicole Formulaic Sequences in First and Second Language Novice Academic Writing
2:50 to 3:20	Quaglio, Paulo Television Dialogue: A Surrogate for Natural Conversation in Diachronic Analysis	Walker, Marsha Google Ngram Viewer versus the Corpus of Historical American English: Academic Word List Findings	Wulff, Stefanie and Gries, Stefan Th. The Genitive Alternation in German and Chinese L2 English	Larsson, Margareta and Snell, Debra Light Up Your Class: Inspire with Corpus Linguistics Tools
3:30 to 4:00	Pickering, Lucy; Pearson, Pam; Bouchard, Julie; Lomotey, Charlotte Fofa; and di Ferrante, Laura Small Talk at Work: Comparison of AAC and Non-AAC User Corpora	Lee, Sun-Hee and Song, Jae-young Particle Ellipsis in Korean Corpora and Register Variation	Poonpon, Kornwipa Corpus-Based Abstract-Writing Material for Thai Graduate Students	Schindewolf, Ariel Cross-Linguistic Self-Repetition Strategies: A Corpus Based Perspective

4:10 to 4:40	Randall, Janet Beth "Yes, but... how do I use it?" Corpus in the Classroom	Taguchi, Naoko; Crawford, Bill; and Wetzel, Danielle Academic Writing Abilities: Cross-Examination of Syntactic Characteristics and Ratings	Tsai, Mei-Hsing and Lu, Xiaofei A Cognitive Semantic Analysis of EFL Speakers' Collocational Errors	Berber Sardinha, Tony; Acunzo, Cristina Mayer; and Kauffmann, Carlos Dimensions of Variation in Brazilian Portuguese
ENIKO CSOMAY PLENARY Classroom Discourse Analysis with Corpus Linguistics: How Much More Do We Know? The Loudermilk Ballroom				
4:50 to 5:50				

Sunday, October 9, 2011

TIME	MARK POPE ROOM	PAUL DUKE ROOM	CHILDS/YOUNG ROOM	BOARD ROOM
[AM] 8:30 to 9:00	Biber, Douglas and Gray, Bethany Being Specific about Historical Change: The Influence of Sub-Register			
9:10 to 9:40	Crossley, Scott Cognition and Corpus Linguistics: What Human Judgments Tell Us about Text Quality	Rudanko, Juhani Comparing Two Patterns of Object Control, with Evidence from Large Corpora	Liu, Dilin and Espino, Maggie A Corpus-Based Behavioral Profile Study of Four Near-Synonymous Adverbs	

9:50 to 10:20	Drescher, Nancy Media Representations of Polynesians in the Diaspora	Römer, Ute The Phraseological Profile Model applied: New insights into academic discourse	Juola, Patrick and Brennan, Patrick Conjecture Generation as a Tool for Corpus Analysis	
10:30 to 11:00	Hardy, Jack University Language Continued: A Multi-dimensional Study of Undergraduate Critical Thinking Writing in the Social Sciences	Vasquez, Camilla "Small Stories" in a Small Corpus: Narratives in Online Reviews	Herrandez, Maria and Hercules, Christopher Web Registers: A Corpus-Based Comparison	
11:10 to 11:40	Chung, Siaw-Fong and Chao, August Preposition-Containing Lexical Bundles and Idiomatic Expressions in Economics Dissertations	Reinholt, Kewyn; Juola, Patrick; Lukon, Shelly C. A System for Creating Back-of-the-Book Indexes	Polat, Brittany and Crossley, Scott Exploring metacognitive conceptualization using Linguistic Inquiry and Word Count (LIWC)	
11:50 to 12:50	RANDI REPPEN PLENARY Using Corpora for Pedagogy: Does it Make a Difference? The Loudermilk Ballroom			
12:50	LUNCH AAAL 2011 Ends			